

“LOFLO” SEPARATOR / METERING UNIT

DESIGN SPECS

1440 Psig Design Pressure

100 ° F Design Temp

2 Phase Vessel

Standard Service

Serving the oil & gas industry
since 1976

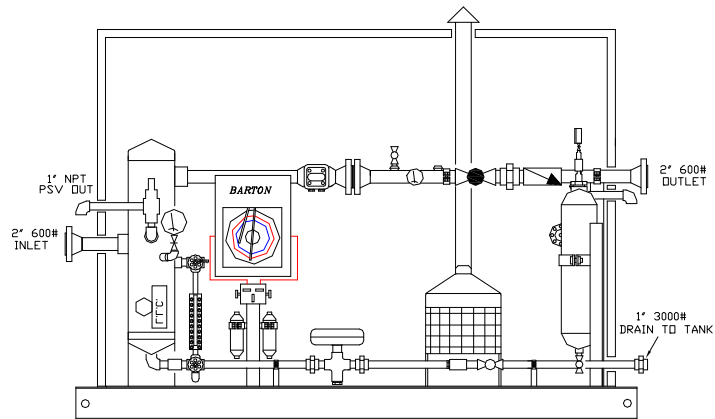
RJV Gas Field Services
Vegreville, Alberta

Ph: 1-780-632-7774
Fx: 1-780-632-6820

Contact:
Don Cherniawsky C.E.T
Manager Manufacture
donc@rjvgas.com

Gas & liquid rates
available on request

RJV 8" x 32" s/s 600# Ansi 1440 psig design single separator / single metering
Specially designed for low gas flow rates along with a minimal amount of
produced liquids.



ELEVATION VIEW

Complete Package Includes

- **RJV** 8" x 32" s/s 600# ANSI 1,440 psi 2-phase vertical mistex separator, 100° F design temp, 1/16" corrosion allowance, inlet divertor, float hood baffle, 4" thick, 9# / cu. ft. density, 304 SST mistex mesh pad fabricated all in accordance to ASME codes Sec VIII registered in the provinces of Alberta, Saskatchewan, & British Columbia
- 2" 600# RF inlet and outlet connection points
- **Nuflo** 2" 600# simplex meter run c/w 2" Npt block & 1" Npt bypass piping
- **COE** 2-pen, 0-1500 psig, 0-150 "WC chart recorder c/w battery operated chart drive
- **COE** pneumatic chemical injection pump c/w 3/8" plunger
- **Norriseal** liquid level controller & liquid level control valve
- **Westeel** 500 gallon steel double walled methanol tank c/w 110% containment
- **CCI** 12,000 BTU 12 volt DC heater c/w lockable battery cable cabinet
- **RJV** 6" x 24" s/s fuel gas scrubber & stand c/w high liquid level fuel gas shut off valve
- **Wika** liquid filled, dual scale pressure indicators
- **Trend** dual scale temperature indicator
- **RJV** urethane injected panel style building around separator and piping
- **RJV** 6" channel iron skid / 3/16" flat plate flooring / 2" spray-on underskid insulation
- **Scada equipment also available**
- **Dual zone metering style also available**